



QtiSAS >= v.2020-04-23

FAQs...

Q.1: how to export a Table/Matrix as ASCII file?

Q.2: how to export all Tables/Matrixes as ASCII files?

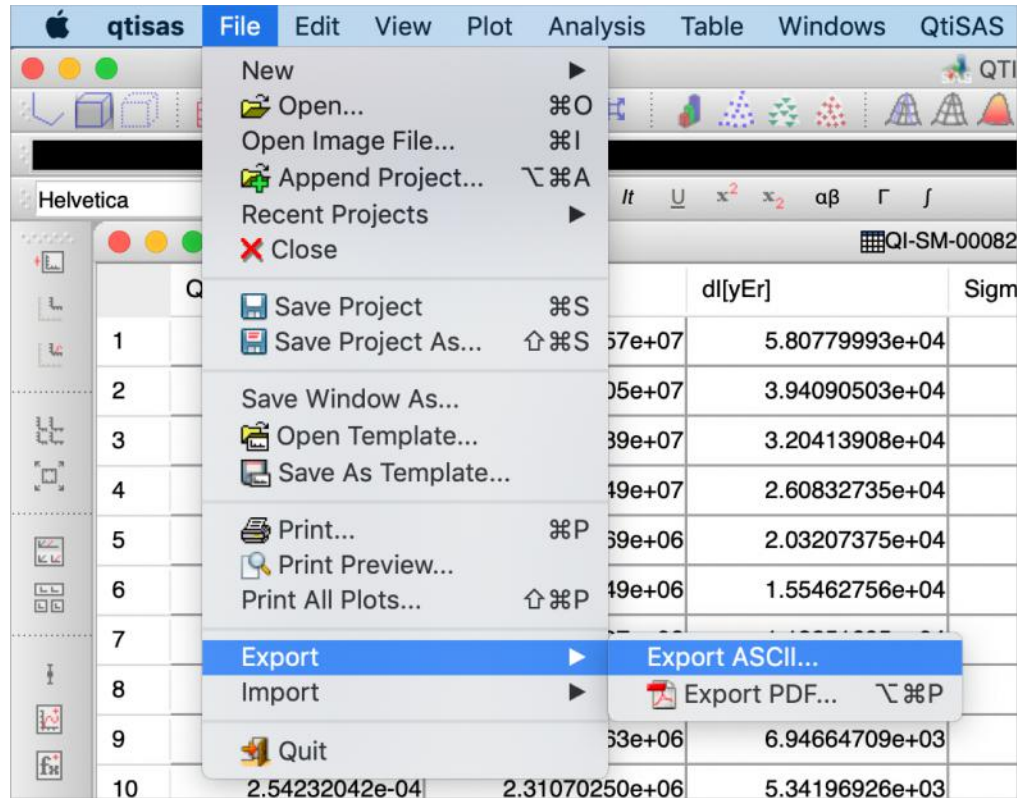
Q.3: how to export selected Tables/Matrixes as ASCII files?

using **File | Export | Export ASCII...** interface

Q.1: how to export a Table/Matrix as ASCII file?

Q.2: how to export all Tables/Matrices as ASCII files?

Q.3: how to export selected Tables/Matrices as ASCII files?

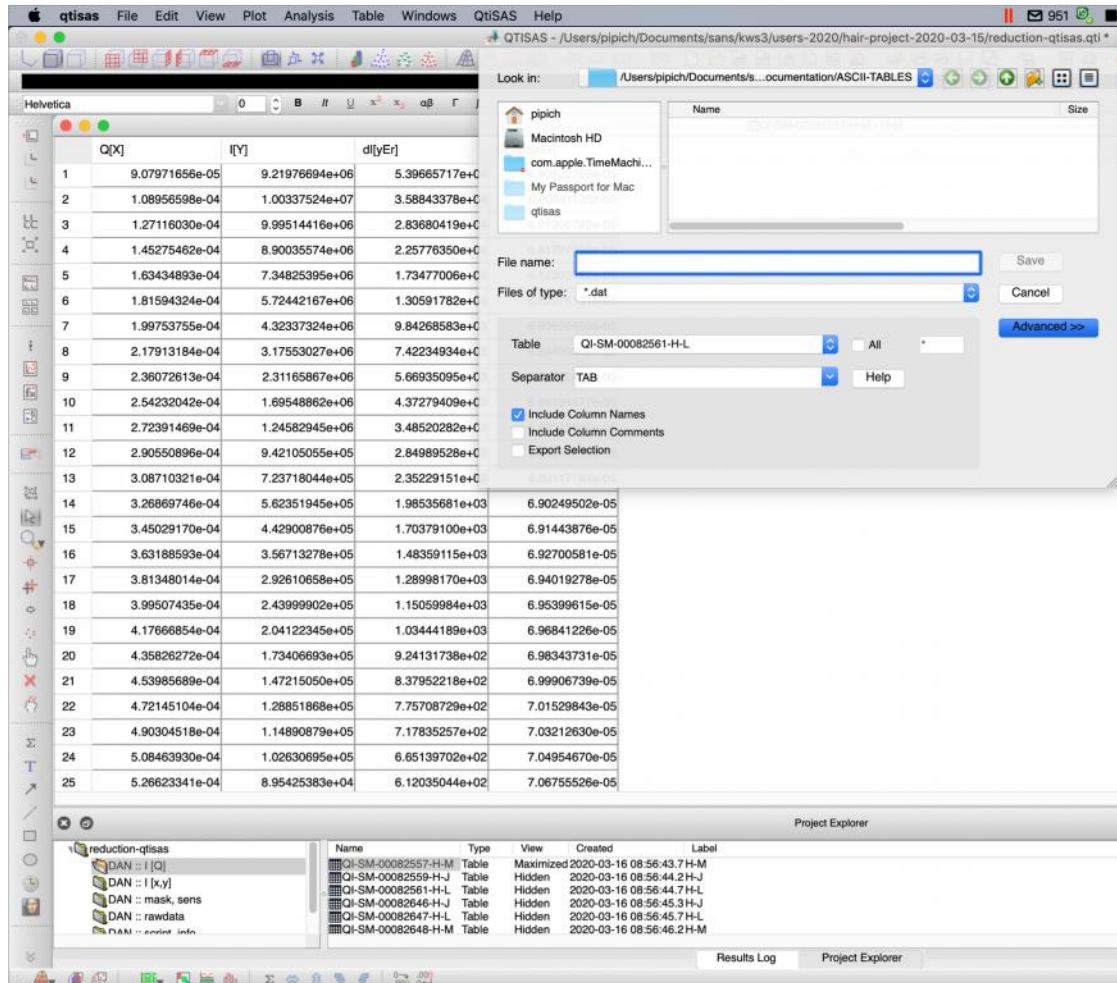


Step 1 (Q.1-Q.3): select **File | Export | Export ASCII...** action

Q.1: how to export a Table/Matrix as ASCII file?

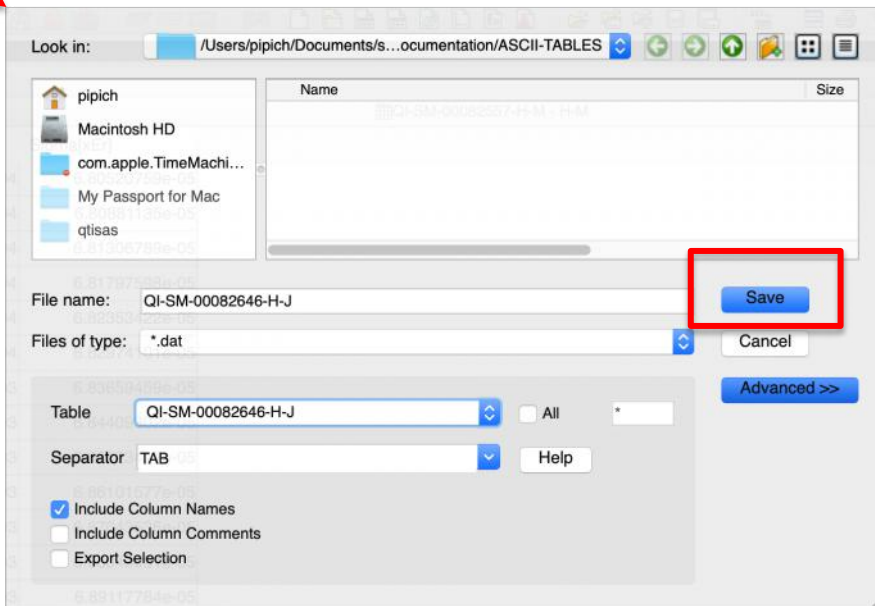
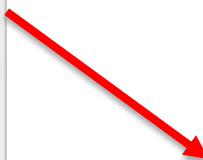
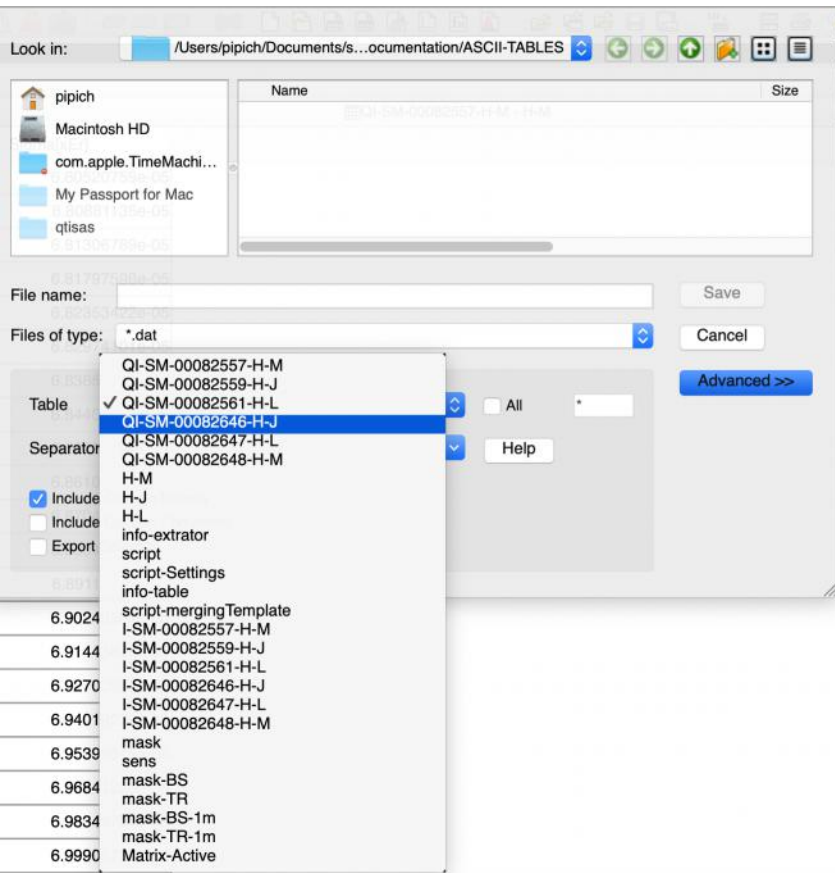
Q.2: how to export all Tables/Matrices as ASCII files?

Q.3: how to export selected Tables/Matrices as ASCII files?



Step 1 (Q.1-Q.3): select **File | Export | Export ASCII...** action

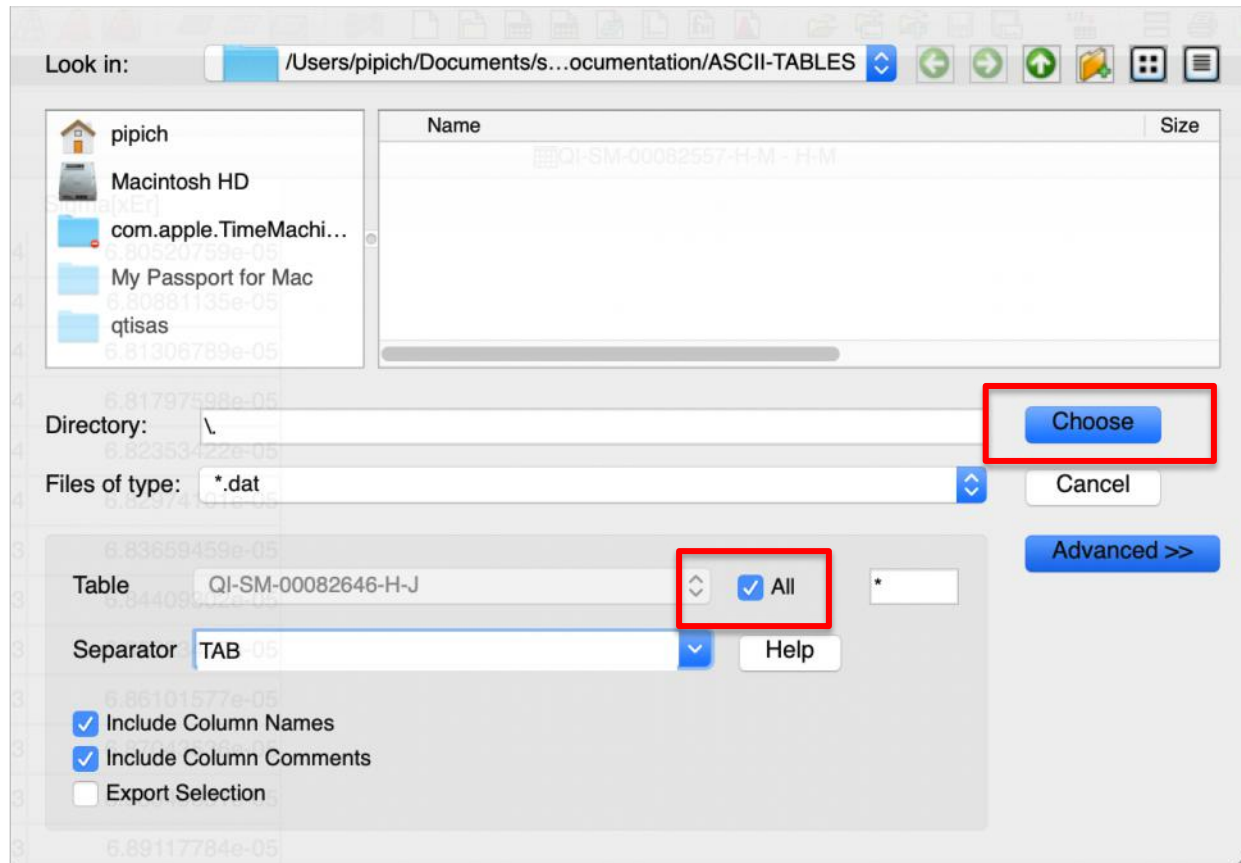
Q.1: how to export a Table/Matrix as ASCII file?



- Step 2 (Q.1): select a Table or Matrix
- Step 3 (Q.1): select options / type of files
- Step 4 (Q.1): push button "Save"

... ready ...

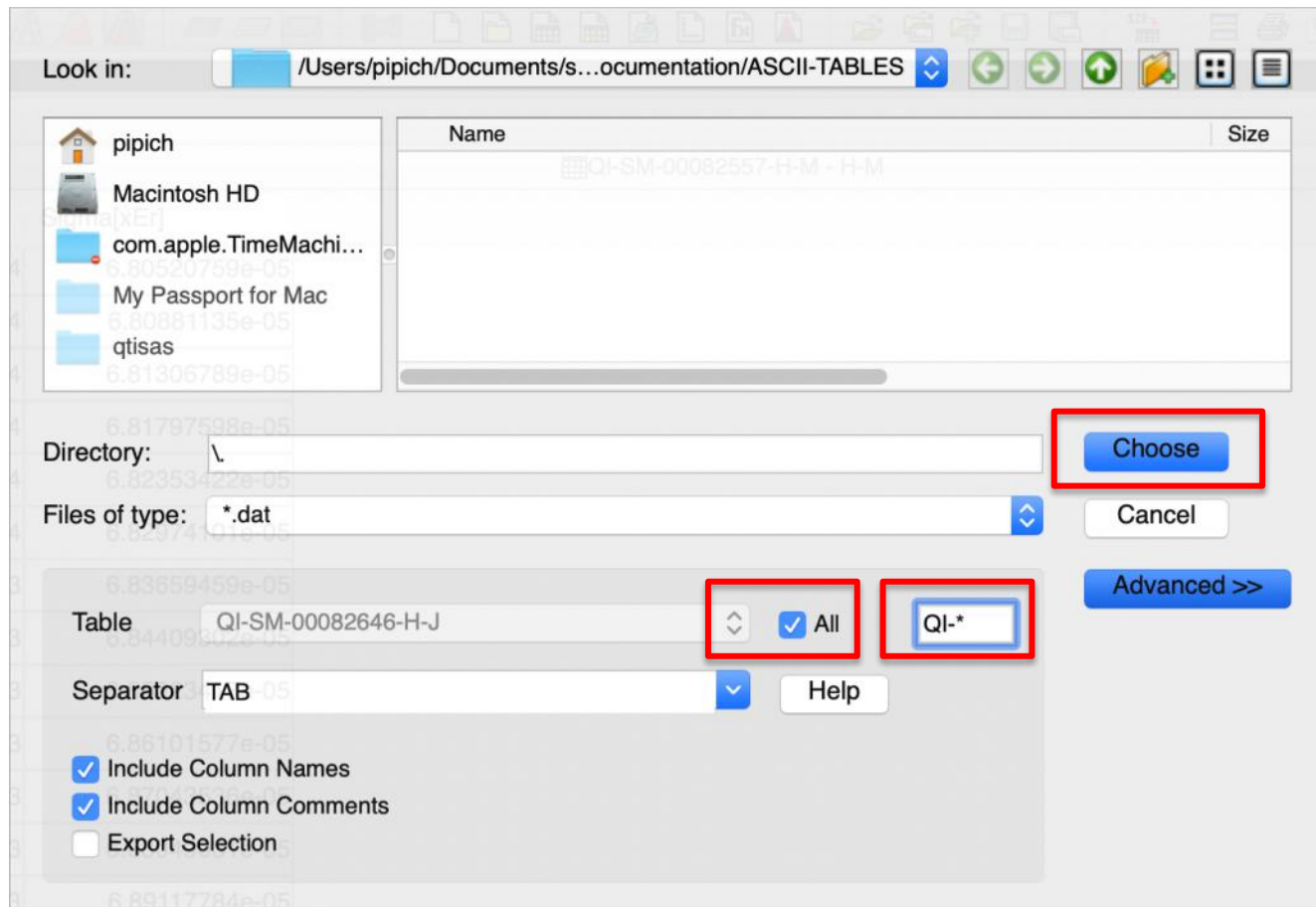
Q.2: how to export all Tables/Matrixes as ASCII files?



- Step 2 (Q.2): activate “**All**” checkbox
- Step 3 (Q.2): select options / type of files
- Step 4 (Q.2): push button “**Choose**”

... ready ...

Q.3: how to export selected Tables/Matrixes as ASCII files?



- Step 2 (Q.3): activate “**All**” checkbox
- Step 3 (Q.3): modify **Wild-Card field** , f.e. “**QI-***”
- Step 4 (Q.3): select options / type of files
- Step 5 (Q.3): push button “**Choose**”

... ready ...