



- **Extract raw-matrixes as ascii-files**
- Open raw-matrixes inside in Qtisas-interface
- Fast look to a raw-matrix

Extract raw-matrixes as ascii-files

- Dan | Options:
 - [1] Select SAS instrument
 - [2] Select input folder
 - [3] Select output folder
- Dan | Rawdata | :: Extract :: Raw-matrixes :: tools
 - [4] Push Extract button
 - [5] Select all files you want to extract raw-matrixes
 - [6] Push open button
- [7] Result: all matrixes with extension *.matrix ill be saved in output/raw-matrix folder

[1-4] Extract raw-matrixes as ascii-files

The screenshot shows the 'CMOS-2048x2048' software interface. The 'Rawdata Tools' tab is active. The 'Data :: Input and Output Folders' section is visible. The 'Input Folder' is set to '/Users/pipich/Documents/sans/other/sals-juelich/' with a file type filter of '*.bmp'. The 'Output Folder' is also set to '/Users/pipich/Documents/sans/other/sals-juelich/'. The 'Data Processing' mode is set to '(S/M) Standard Mode'. Red boxes highlight the instrument name, the input folder, and the output folder.

1 CMOS-2048x2048 (S/M) Standard Mode

Data :: Input and Output Folders

Input Folder

/Users/pipich/Documents/sans/other/sals-juelich/ *.bmp

Search for rawdata also in sub-folders

Output Folder

/Users/pipich/Documents/sans/other/sals-juelich/

SA(N)S Instrument :: Configuration

DAN.SANS

The screenshot shows the 'CMOS-2048x2048' software interface with the 'Rawdata Tools' tab active. The 'Rawdata Tools' section is visible. The 'Header(s) - to - Info-Table' and 'Image(s) - to - Info-Matrix' sections are visible. The 'Fast Info Extractor' section is visible. The 'Extract :: Raw-matrixes' section is visible, showing the 'from: INPUT folder' and 'to: OUTPUT/raw-matrix folder' settings. The 'Extract' button is highlighted with a red box.

DAN.SANS

CMOS-2048x2048

Options Rawdata Tools Mask Sensitivity Data Processing Merge

Rawdata Tools

:: Header(s) - to - Info-Table ::

Compact + Matrixes

Detector Sum for active Mask

:: Image(s) - to - Info-Matrix ::

columns: 3

Mask Sens Norm ROI Ascii

:: Header(s) - Info Extractor ::

Sample Add

:: Fast Info Extractor ::

View Matrix

2022-02-04__12-47-27-BS

-02-04__12-47-27-BS-0p5mm Sample

:: Add :: Raw Files ::

Select Files & Add

Add Files in Active Table (2 steps):

Select Files & Create Table Add

:: Extract :: Raw-matrixes ::

from: INPUT folder

to: OUTPUT/raw-matrix folder

4 Extract

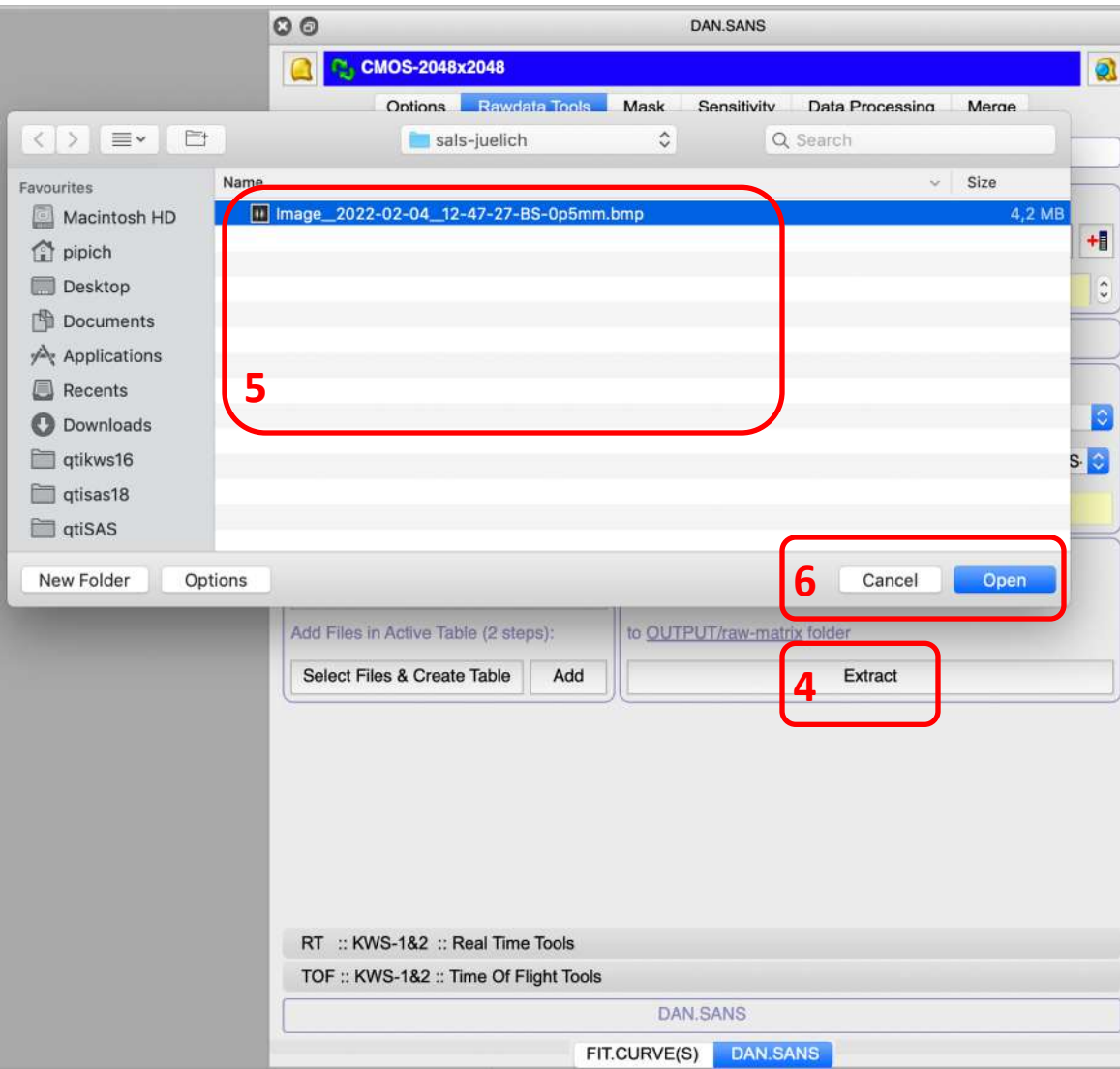
RT :: KWS-1&2 :: Real Time Tools

TOF :: KWS-1&2 :: Time Of Flight Tools

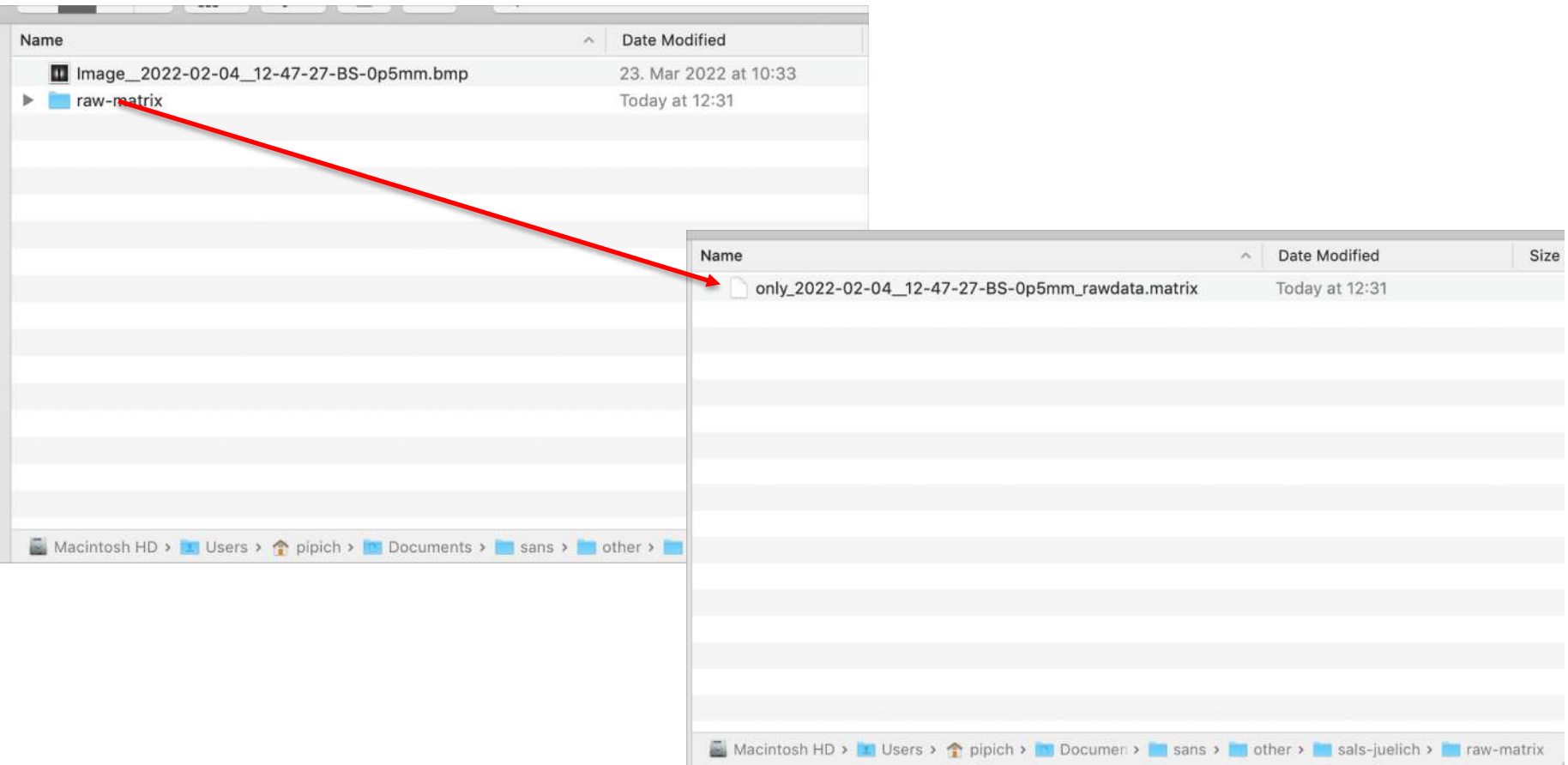
DAN.SANS

FIT.CURVE(S) DAN.SANS

[4-6] Extract raw-matrixes as ascii-files



[7] Result: All matrixes with extension *.matrix will be saved in output/raw-matrix folder



2048x2048 matrix

only_2022-02-04_12-47-27-BS-Op5mm_rawdata.matrix — Edited

14	8	11	12	8	11	4	14	15	12	16	12	11	8	14	7	11	12	9	16	24	21	
12	4	8	8	12	5	1	7	8	12	12	8	8	8	1	5	5	7	1	5	4	7	4
1	5	8	0	2	2	1	7	4	7	4	5	7	7	5	7	4	1	4	4	7	4	7
9	11	8	4	2	5	8	8	8	7	2	1	8	9	2	11	1	2	5	5	5	2	2
5	4	8	5	8	7	7	7	8	8	5	14	9	5	16	5	14	5	8	11	8	8	7
7	9	8	5	7	4	16	4	15	12	7	4	9	16	9	12	9	12	9	12	12	12	12
8	12	9	9	9	8	22	26	22	7	9	8	18	26	8	11	11	12	12	21	16	18	18
18	14	22	24	25	28	18	18	18	18	24	28	31	26	19	16	24	21	24	16	15	15	19
22	21	16	18	14	12	16	15	24	25	22	22	19	25	25	33	32	25	18	14	14	14	14
5	8	8	8	19	22	19	16	18	8	21	19	15	18	15	25	24	15	14	16	12	19	19
19	11	8	8	8	8	19	21	19	14	8	11	14	18	24	12	14	11	9	9	7	1	1
7	8	14	9	11	7	8	7	8	5	5	2	7	5	4	4	7	5	8	8	4	4	4
4	4	4	4	7	4	0	4	4	4	5	4	1	2	4	4	2	4	7	5	7	7	7
7	4	4	8	8	8	7	4	8	5	8	7	12	12	9	4	4	5	4	9	5	5	5
9	8	5	5	5	11	9	2	5	5	8	15	15	16	7	11	19	18	9	7	7	7	7
11	16	15	14	5	11	12	19	19	19	15	11	15	18	24	24	15	24	14	16	16	14	14
15	12	9	9	12	11	19	16	16	19	22	22	21	18	16	22	21	22	21	18	16	24	24
25	24	18	11	16	25	29	19	21	22	21	22	22	25	18	18	22	25	26	16	21	21	21
22	26	22	12	12	18	19	25	24	15	18	14	19	14	24	21	21	28	22	16	15	15	15
26	28	31	26	19	16	21	25	26	22	19	22	24	24	26	19	19	19	16	15	18	18	18
21	19	11	15	16	16	12	16	16	11	19	18	11	15	19	14	16	16	12	19	18	18	18
14	18	15	19	24	22	24	19	16	19	15	22	22	24	21	19	12	11	11	16	11	11	11
11	12	9	9	9	15	12	18	11	9	11	11	14	16	14	16	11	8	7	5	2	2	2
15	9	16	15	15	8	11	8	5	12	4	8	9	8	9	9	11	5	12	11	12	12	12
11	7	5	5	8	4	5	7	7	7	15	14	9	8	8	5	8	5	4	7	5	5	5
5	9	9	7	7	5	8	2	2	5	5	11	8	2	2	7	8	4	9	5	8	8	8
9	4	5	5	9	8	8	7	5	8	7	5	8	4	9	8	2	3	9	5	9	9	9
4	4	5	9	9	12	8	5	2	15	9	7	4	2	5	9	8	12	15	12	12	9	9
11	7	12	11	18	7	8	8	8	12	16	18	18	21	16	14	18	16	12	12	19	19	19
16	15	16	12	14	18	14	19	24	15	26	21	19	21	19	15	19	18	22	25	22	24	24
25	22	32	26	25	24	21	21	21	18	21	22	22	35	29	21	24	18	28	26	25	21	21
21	26	35	33	25	24	28	25	24	28	28	26	31	33	33	31	25	38	45	39	25	25	
26	31	35	33	15	28	24	25	24	26	24	21	28	36	42	36	41	36	32	32	33	32	32
38	32	38	29	24	24	28	28	24	24	24	22	29	29	29	31	22	32	36	33	39	32	32
35	32	42	33	33	26	35	38	33	29	25	26	29	31	28	32	32	36	35	29	25	24	24
32	33	33	32	31	28	31	33	31	26	31	35	31	39	41	31	33	38	32	32	33	32	32
41	39	35	24	31	26	28	29	35	29	33	36	39	41	33	25	29	33	36	33	28	28	28
35	33	35	29	33	33	35	38	41	32	43	31	38	29	29	32	29	32	32	32	31	31	31
32	33	33	32	31	28	31	32	31	26	31	35	41	39	31	33	33	38	28	31	32	32	32
33	38	41	38	36	35	38	31	32	28	31	36	35	38	35	35	35	36	39	39	33	33	33
28	41	33	42	39	36	35	38	32	33	38	38	28	29	26	29	32	32	29	31	31	31	31
35	33	33	31	36	33	33	36	36	32	35	36	38	31	31	35	31	29	29	29	31	31	31
39	35	33	25	29	31	28	33	35	38	33	38	35	32	32	31	28	25	33	29	29	29	29
26	28	32	36	33	39	28	25	25	26	29	35	32	33	29	28	29	26	21	25	22	22	22
21	22	29	32	28	32	33	32	32	32	32	32	32	32	24	25	28	28	31	33	33	33	33
28	24	24	22	33	36	35	41	33	25	33	25	28	28	24	36	31	38	41	29	24	24	24
29	31	32	31	33	29	26	22	22	33	33	29	32	26	26	25	25	36	38	42	33	33	33
31	32	39	31	35	32	35	32	35	32	31	28	43	39	36	41	39	36	38	28	32	32	32
33	36	39	33	36	32	33	29	33	31	33	33	29	33	29	33	25	29	28	28	32	42	42
41	38	38	32	28	33	32	33	29	33	28	28	26	29	29	29	26	22	26	25	35	25	25
28	38	31	33	28	31	32	26	29	36	28	33	36	28	34	29	36	35	43	33	43	31	31
32	28	21	28	28	35	24	24	24	29	28	33	33	29	33	26	25	28	29	28	28	28	28
28	38	31	39	32	39	25	25	25	31	29	28	28	28	41	35	39	32	28	41	41	41	41
29	29	25	26	21	24	24	24	22	31	22	25	29	26	24	18	24	21	29	21	29	29	29
24	26	26	31	15	14	24	22	22	21	21	22	25	25	25	26	26	25	26	26	26	26	26
26	25	26	24	28	26	28	28	28	36	28	32	28	28	31	33	31	33	31	26	31	26	26
28	31	28	28	28	26	26	31	29	31	29	22	22	22	31	29	29	28	26	24	21	24	24
21	18	16	18	18	19	16	14	11	11	16	15	16	16	21	25	24	14	12	12	16	22	22
12	14	15	15	12	19	18	15	14	15	15	12	12	12	15	18	16	15	21	19	25	25	25
26	22	14	12	19	16	15	16	14	14	14	12	15	16	11	11	12	18	18	18	16	16	16
11	7	11	12	11	9	11	11	11	14	15	16	14	15	9	7	12	15	5	8	5	5	5
1	5	7	7	8	4	11	4	11	7	9	7	5	7	12	5	5	8	7	7	9	9	9
7	8	7	4	5	5	5	5	5	4	4	2	5	2	4	2	14	12	9	4	7	5	5
7	8	4	5	2	2	4	4	5	2	8	4	2	5	2	9	8	8	8	11	9	12	12
1	7	8	8	8	7	5	8	11	7	5	2	5	8	7	9	8	8	8	8	9	9	9