



QtiSAS >= v.2020-04-15

DAN::FAQs ...

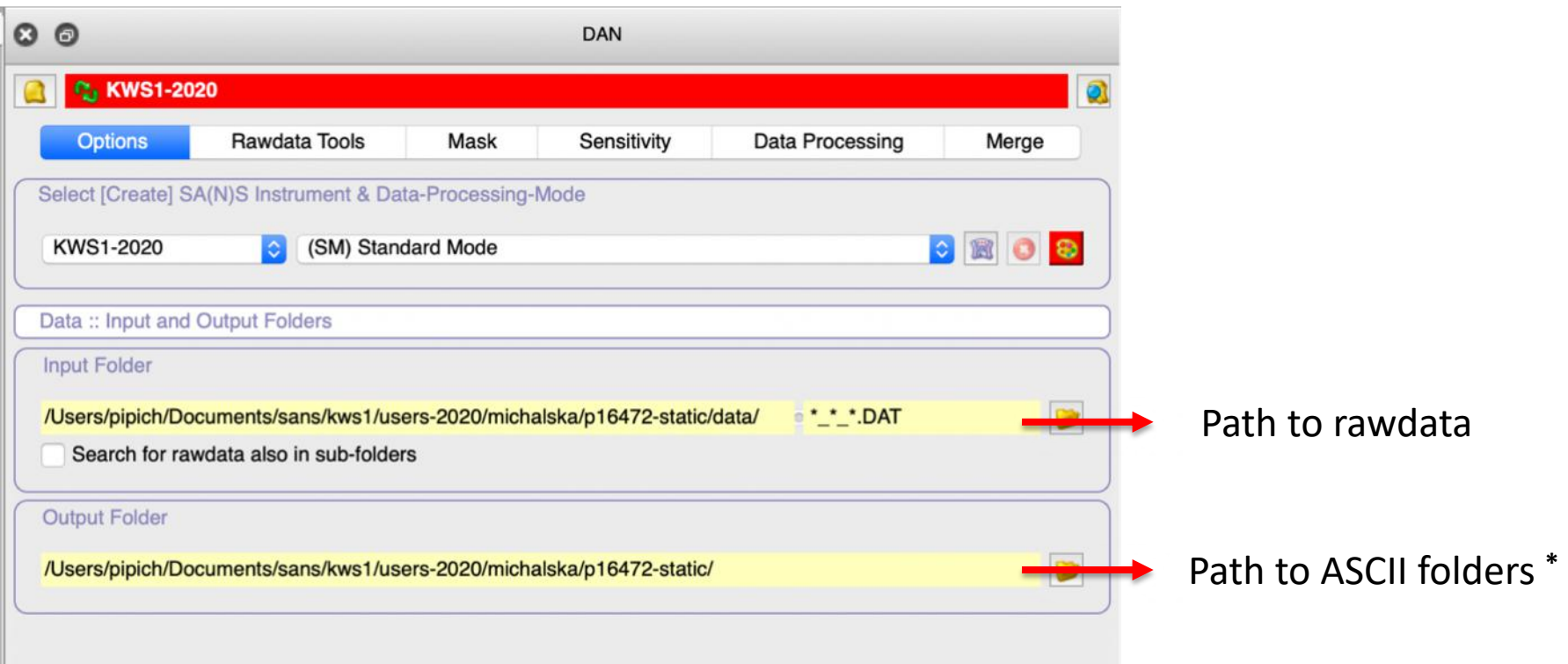
Q.0: where are saved generated in DAN ASCII-files?

Q.1: how to export DAN data (I[x,y], I[Q] ...) as ASCII files?

Q.2: how to export merged data I[Q] as ASCII files in DAN?

using **DAN** interface

Q.0: Where are saved generated in DAN ASCII-files?



* By default after selection of path to rawdata, path to ASCII folders is also set:

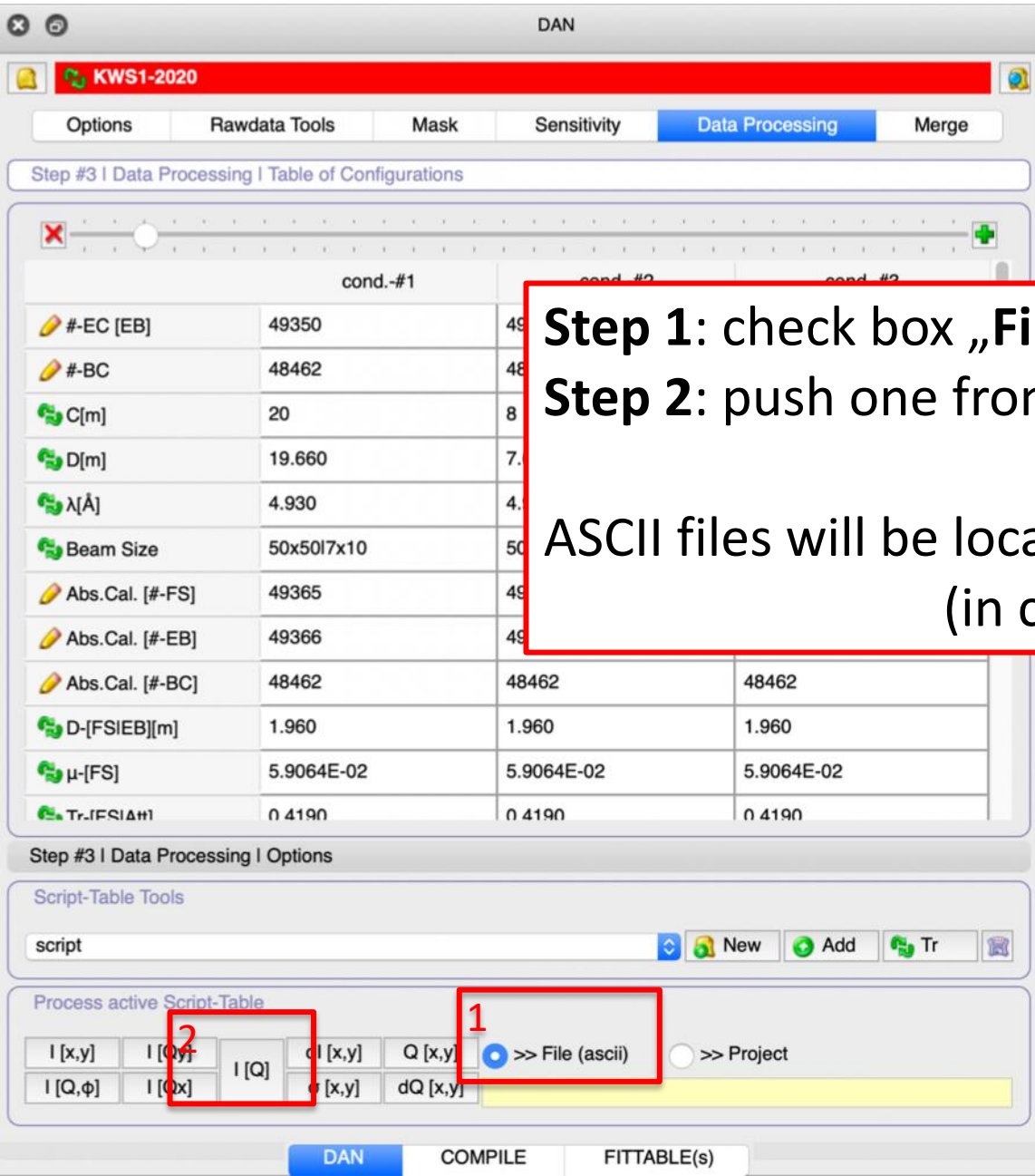
- **\$InPath:** .../p16472-static/data/
- **\$OutPath:** .../p16472-static/

Generated in DAN ASCII files will be located

- .../p16472-static/ASCII-QI/ radial averaged files
- .../p16472-static/ASCII-I/ 2D-matrixes after reduction
- .../p16472-static/ASCII-QI-MERGED/ merged radial averaged files

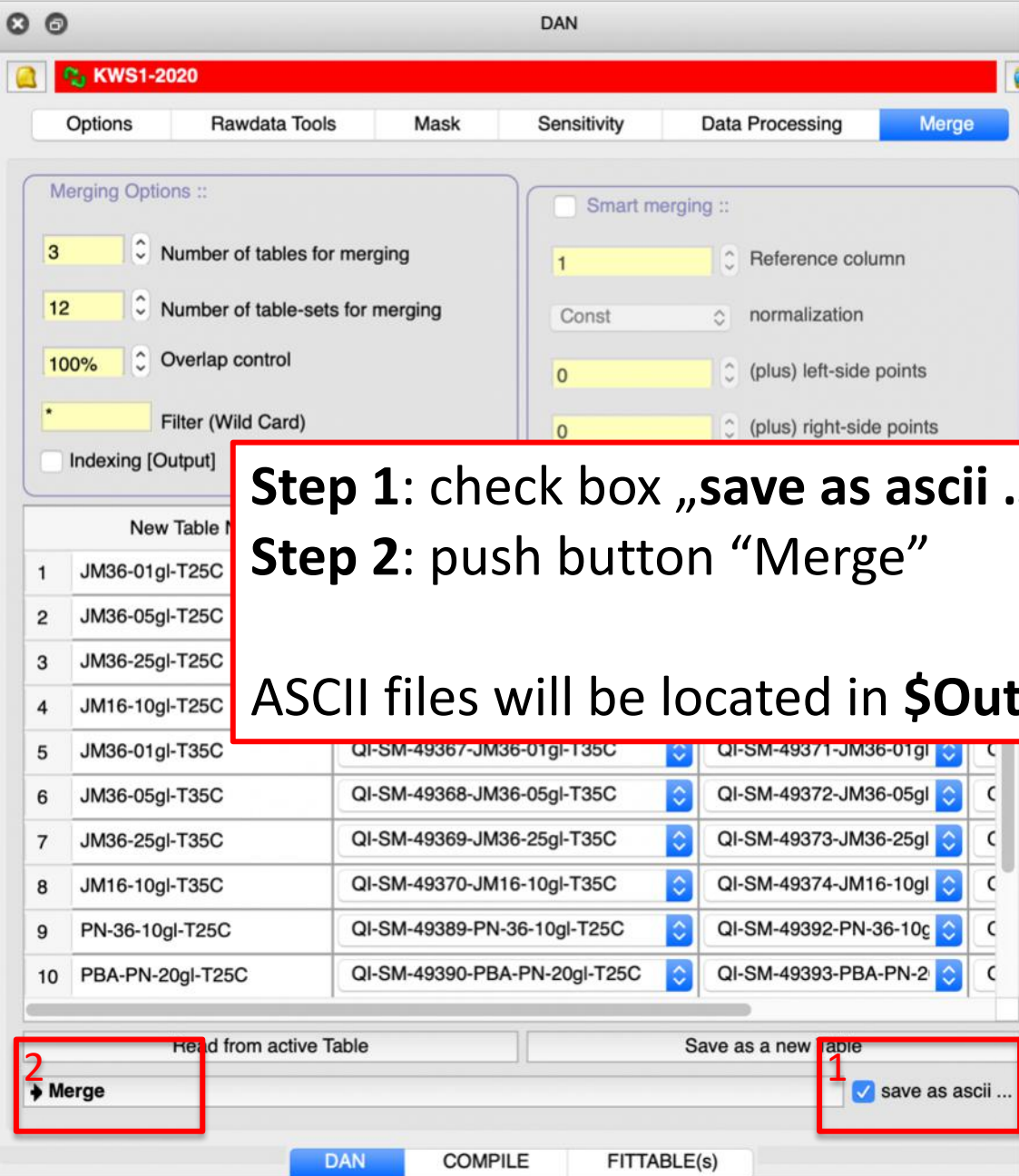
...

Q.1: how to export DAN data (I[x,y], I[Q] ...) as ASCII files?



Step 1: check box „File (ascii)“
Step 2: push one from process buttons, f.e. I[Q]
ASCII files will be located in \$OutPath/ASCII-QI/
(in case of I[Q])

Q.2: how to export merged data I[Q] as ASCII files in DAN?



Step 1: check box „save as ascii ...“

Step 2: push button “Merge”

ASCII files will be located in \$OutPath/ASCII-QI-MERGED/

2
Merge

1
save as ascii ...